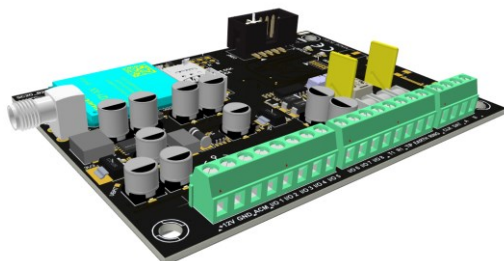


LX30B-Q40T

DATA SHEET of

2G/4G Communicator LX30B with Smart Connector feature



EBS Sp. z o.o.
59 Bronislawa Czecha St.
04-555 Warsaw, POLAND
E-mail: dws@ebssmart.com
Technical suport: suport@ebssmart.com
Webpage: www.ebssmart.com

Product name		2G/4G Communicator LX30B with Smart Connector feature		
Model		LX30B-Q40T		
Power supply parameters		Voltage supply	13,8V _{DC} (acceptable: 12-14V _{DC})	
		Power consumption (average/max)	100mA/125mA@13,8V _{DC}	
Modem		Variant	Quectel EG915U-LA	
		Manufacturer	Quectel Wireless Solutions Co., Ltd. Building 5, Shanghai Business Park Phase III (Area B), No.1016 Tianlin Road, Minhang District, Shanghai 200233, China	
Frequencies range		Uplink MS > BTS	LTE-FDD (Band 2)	1850 – 1910 MHz
			LTE-FDD (Band 3)	1710 – 1785 MHz
LTE-FDD (Band 4)	1710 – 1755 MHz			
LTE-FDD (Band 5)	824 – 849 MHz			
LTE-FDD (Band 7)	2500 – 2570 MHz			
LTE-FDD (Band 8)	880 – 915 MHz			
LTE-FDD (Band 28)	703 – 748 MHz			
LTE-FDD (Band 66)	1710 – 1780 MHz			
GSM850	824 – 849 MHz			
EGSM900	880 – 915 MHz			
Transmitting Power (50Ω load)		Downlink BTS > MS	LTE-FDD (Band 2)	1930 – 1990 MHz
			LTE-FDD (Band 3)	1805 – 1880 MHz
LTE-FDD (Band 4)	2110 – 2155 MHz			
LTE-FDD (Band 5)	869 – 894 MHz			
LTE-FDD (Band 7)	2620 – 2690 MHz			
LTE-FDD (Band 8)	925 – 960 MHz			
LTE-FDD (Band 28)	758 – 803 MHz			
LTE-FDD (Band 66)	2110 – 2200 MHz			
GSM850	869 – 894 MHz			
EGSM900	925 – 960 MHz			
Receiving Sensitivity (typical)		Downlink BTS > MS	DCS1800	1805 – 1880 MHz
			PCS1900	1930 – 1990 MHz
			LTE-FDD	Class 3 (23dBm ±2dB)
			GSM850	Class 4 (33dBm ±2dB)
			EGSM900	Class 4 (33dBm ±2dB)
Receiving Sensitivity (typical)		Downlink BTS > MS	DCS1800	Class 1 (30dBm ±2dB)
			PCS1900	Class 1 (30dBm ±2dB)
			LTE-FDD (Band 2)	-98.1dBm
			LTE-FDD (Band 3)	-98.2dBm
			LTE-FDD (Band 4)	-97.5dBm
Receiving Sensitivity (typical)		Downlink BTS > MS	LTE-FDD (Band 5)	-97.4dBm
			LTE-FDD (Band 7)	-96.1dBm
			LTE-FDD (Band 8)	-97.5dBm
			LTE-FDD (Band 28)	-99.4dBm
			LTE-FDD (Band 66)	-97.9dBm

		GSM850	-108dBm
		EGSM900	-106.8dBm
		DCS1800	-107.5dBm
		PCS1900	-107.2dBm
Card supported		Nano SIM	
Transmission channels		GPRS, LTE, SMS, PSTN* *transparent, PSTN dialer required in the alarm control panel	
Simulated PSTN line		YES	
Protocols supported on the phone input		SIA, ContactID	
List of compatible control panels supported by Smart Connector function (keybus connection)	DSC	PC1404, PC585, PC1565, PC5010, PC5020, PC1616, PC1832, PC1864	
	Paradox	MG5000, MG5050, MG5050E, SP4000, SP5500, SP6000, SP7000, SP65, EVO48, EVO192, EVOHD	
	Honeywell	VISTA-15P, VISTA-20P, VISTA-21P, VISTA-48	
Inputs / Outputs		8 configurable	
AC power detection input		Maximum voltage 25VAC	
Output functions (ways of control)		<ul style="list-style-type: none"> - loss of cellular signal - cellular signal jamming - full control via server or through SMS - reaction on inputs 	
Serial interface for connecting the alarm control panel		RS232 / RS485 (lines: CLK, DAT, A, B) transmission speed up to 115200bps	
Quantity of system events stored in history		5000	
Data transmission security		AES method and 256-bit encryption keys	
Status LEDs (functions)		4 LEDs (cellular signal level, device status, DTMF communication)	
Configuration		Remote: GPRS, LTE, SMS	
		Local: from PC (required SP-PROG or MINI-PROG-BT)	
Remote firmware update		YES	
Temperature range of working		-10°C ... +55°C	
Humidity range of working		5% ... 93% (without condensation)	
Dimension		PCB: 102mm x 73mm	